

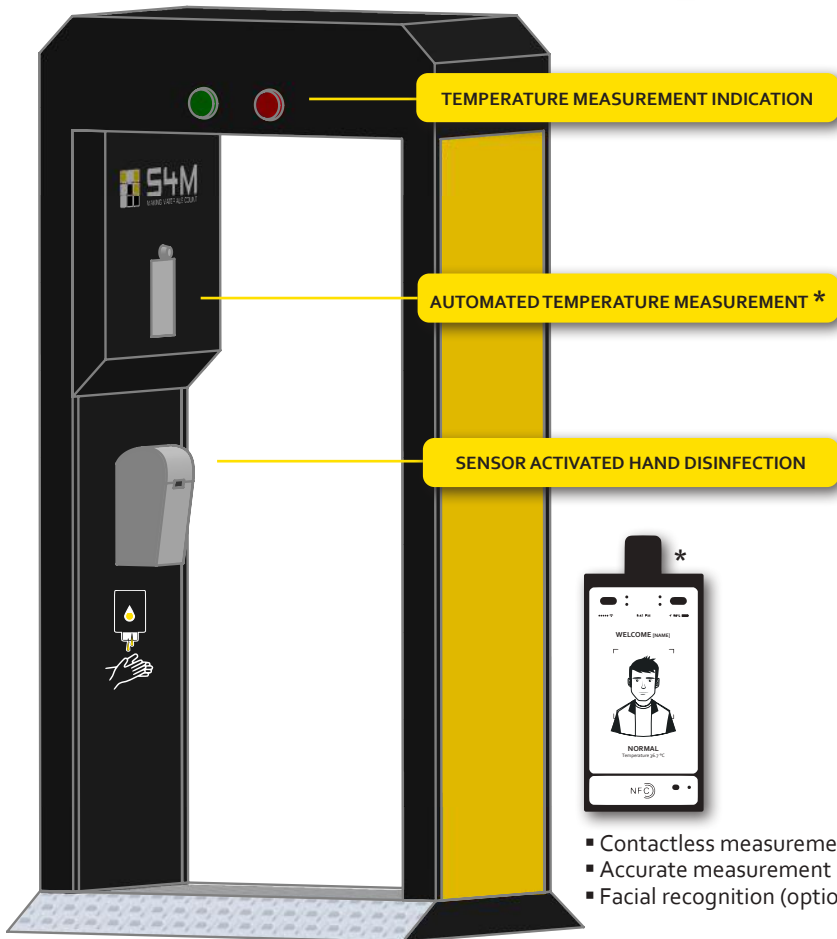
“FIT 4 ENTRY” GATE

TEMPERATURE MEASUREMENT & HAND DISINFECTION DEVICE



S4M
MAKING MATERIALS COUNT

MADE IN BELGIUM 



- Contactless measurement
- Accurate measurement
- Facial recognition (option)

USAGE AREA

- » Suitable for industrial sites, factories, train stations, exhibition centers, schools, supermarkets and all other places with a large number of employees/visitors.
- » For indoor and outdoor use.

WORKING PRINCIPLE

- » Accurate, efficient and safe temperature detection by contactless temperature measurement.
- » Integrated sanitizer for hand disinfection.

HOW TO USE

Our FIT 4 ENTRY Gate is designed to facilitate fast and easy testing and disinfection of children, adults and elderly.

Our FIT 4 ENTRY Gate supports and simplifies:

- » Safe access control
- » Quick temperature risk identification
- » Monitoring of crowded areas

- POSSIBILITY TO CONNECT MULTIPLE “FIT 4 ENTRY” GATES -



SAFETY
4MANKIND
MAKING PEOPLE COUNT!

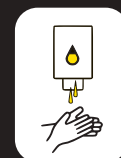
PROTECT YOURSELF AND OTHERS
PREVENT THE SPREAD OF VIRUSES



TEMPERATURE MEASUREMENT



TEMPERATURE ALARM

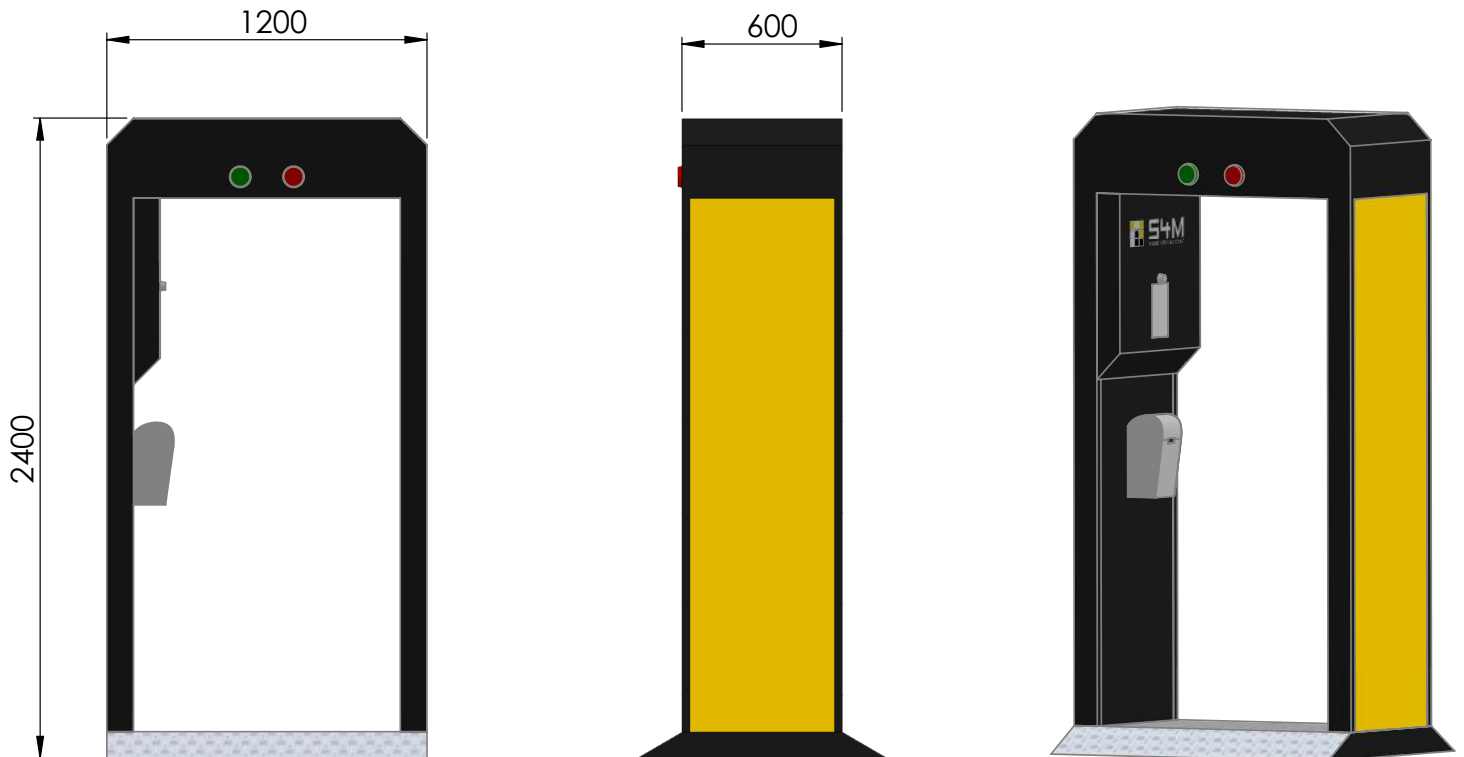


HAND DISINFECTION

SAFETY 4 MANKIND

Our **FIT 4 ENTRY Gate** is an easy-to-use solution with **automated temperature measurement and integrated hand sanitizer**.

- Fully automated and touchless.
- When a person enters the gate, his/her temperature will automatically be measured by an integrated thermal camera.
- Our system can effectively prevent large-scale disease transmission and has its main function to provide and maintain a sanitary environment for your employees, clients and visitors.



TECHNICAL SPECIFICATIONS

MODEL	FIT 4 ENTRY «Gate»
SIZE	60 cm L 120 cm W 240 cm H
WEIGHT	80 kg
DETECTION TIME	Instant
DETECTION DISTANCE	40 cm - 70 cm
DETECTION METHOD	Thermal camera
TEMPERATURE MEASUREMENT AREA	Forehead
TEMPERATURE MEASUREMENT ACCURACY	± 0.3 degrees Celcius

SOLUTIONS4MATERIALS

Toekomstlaan 41d
2200 Herentals
T: 0032 14 25 52 80
F: 0032 3 460 39 59
info@solutions4materials.com

WWW.SOLUTIONS4MATERIALS.COM

24/7 ON-SITE MATERIAL MANAGEMENT

ALL OUR SAFETY SOLUTIONS CAN BE COMBINED WITH OUR **AUTOMATIC DISTRIBUTION SOLUTIONS** SO YOU ALWAYS HAVE THE MOST IMPORTANT PERSONAL PROTECTION EQUIPMENT IN STOCK AND ACCESSIBLE ON-SITE

