

DONNING AND DOFFING OF CHEMICAL RESISTANT GLOVES

DONNING YOUR GLOVES

1

PRIOR TO DONNING YOUR PROTECTIVE GLOVES



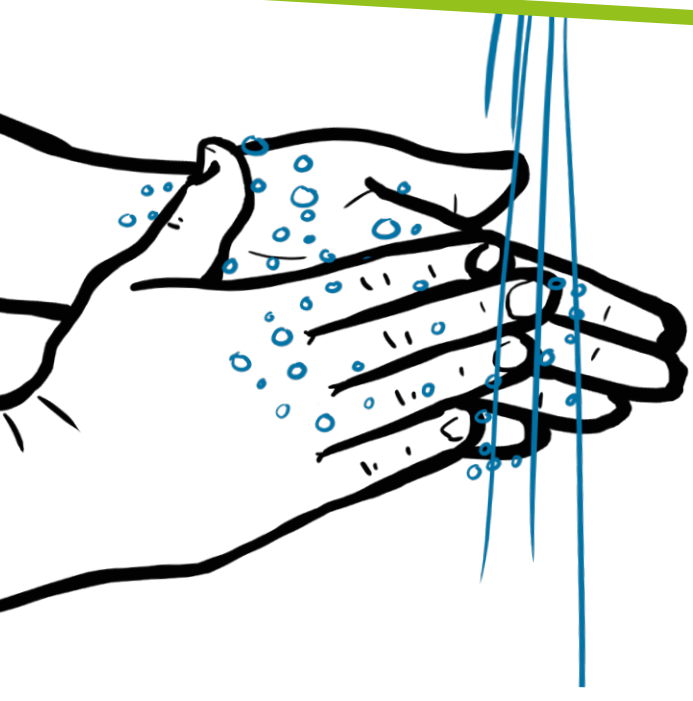
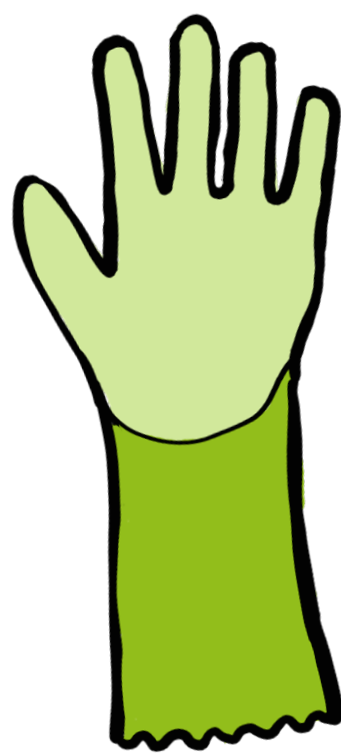
Read instructions for use carefully



Wear an inner glove if required



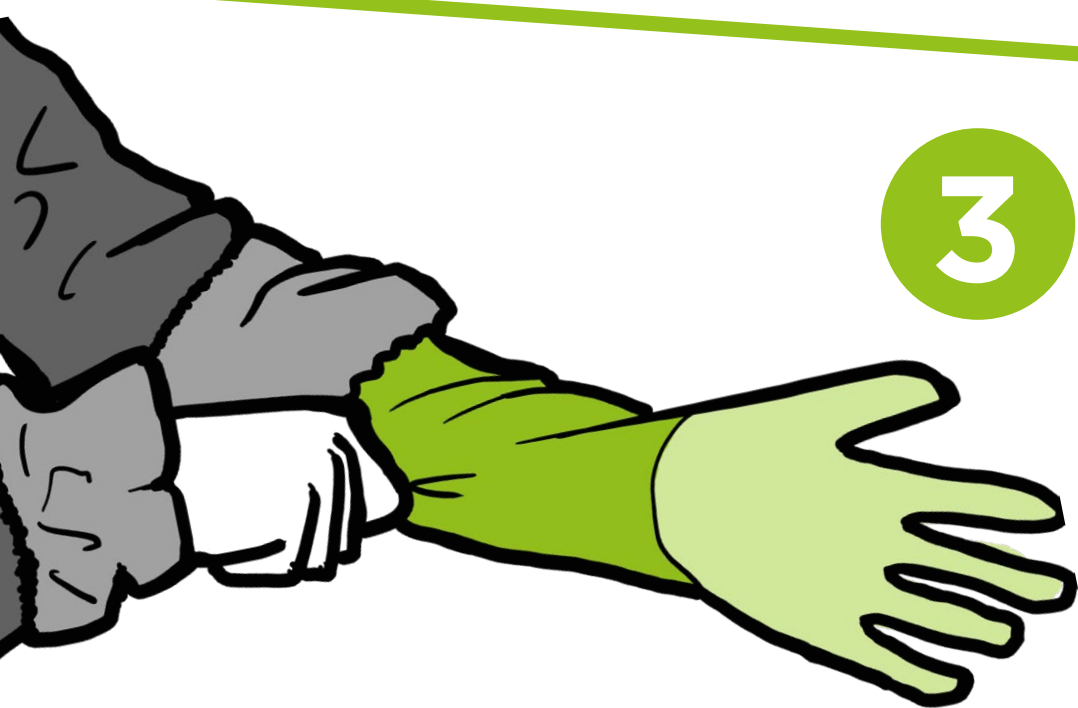
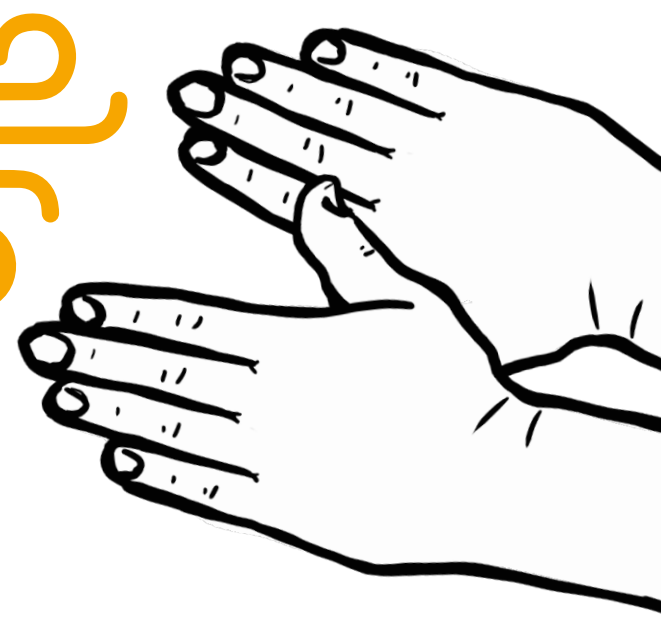
Inspect the gloves for any defects and imperfections



2

WASH AND DRY HANDS

Wash and ensure your hands are completely dry before donning the gloves



3

DONNING YOUR GLOVES

- Pull the gloves on one at a time
- Fold back your outer sleeve
- Ensure the gloves fit well

4

SEALING THE GLOVES

Return the outer sleeve to its original position

Wear a glove connector to liquid tight seal your glove

Alternatively, use impermeable tape



DOFFING YOUR GLOVES



1

- Rinse your gloves before doffing to reduce risk of skin contamination.
- If this is not possible, take extra care when doffing to avoid the risk of chemical splash

2

- Carefully remove the glove connector or tape
- Pull the fingertips of one of the gloves

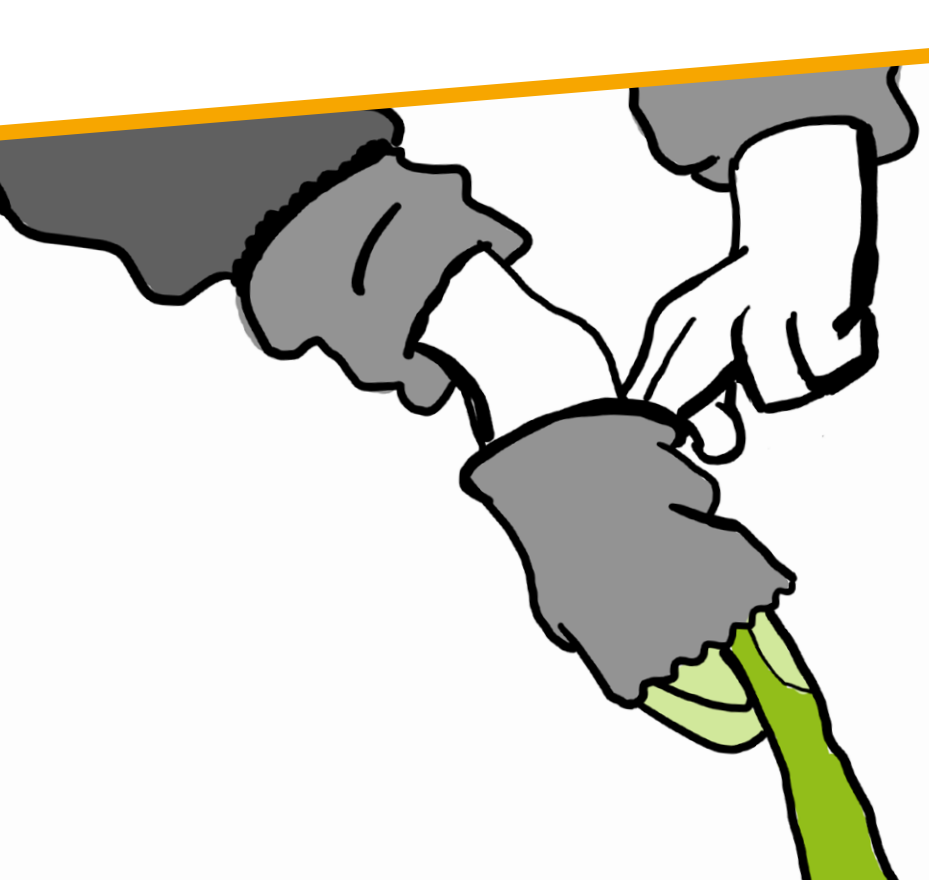
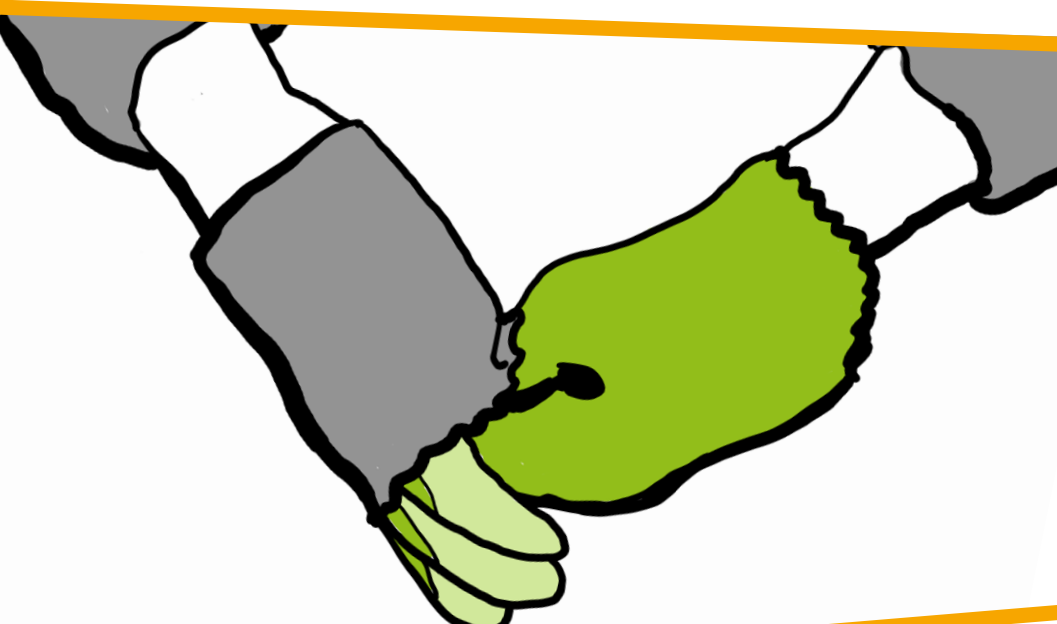


3

- Crumple the loosened finger tips into a ball
- Free your hand partially from the loosened glove

4

- Using the cuff of the partially removed glove, grip the other cuff and pull down until the second glove is inside out and over the top of the first glove



5

- Carefully dispose of the gloves into an appropriate waste unit. Ensure your skin doesn't make contact with the outer glove